

---

# CAE PERFORMANCE PRODUCTS PTY/LTD

Pyrenees Hwy Chewton, VIC. 3450  
Telephone : ( 03 ) 5472 1442 - Fax ( 03 ) 5472 4111

---

## Cobra Universal Cable Wiper Kit Component List Suits GT40 Requirements.

Wiper Motor Assembly with Flexible Drive Cable  
U Clamp and Rubbers  
Three Wheel boxes and Chrome Bezels  
Switch and Relay Sub Loom.  
Three Arms and Blades A103,s and three B25110,s  
Customer Instruction Sheet and Pin out for wiring the wiper

**Note:** Do not kink the Bundy Tubes as serious damage to the wiper motor will occur.

**Kink or dented tube must be replaced.**

Some gentle bending can be done in a standard tube bender tool to give a better fitment to the cable drive. Always bend with the flex cable on the inside.

It may be necessary to adjust the fit of the tube spacers to the wheel box posts to give the correct angle of operation in relation to the windscreen glass.

Fitting Instructions

Universal Cable Driven Wiper Kit

- 1 Locate suitable position of the Wheel boxes, Drill 3/8 clearance hole at the correct angle to give the pressure on the blades. (Should be as close to 90 degrees to the windscreen glass as possible.) Note---- the Tubing supplied was taken from dimensions supplied for Python Cars Kits.
- 2 Fit the two or three new wheel boxes and shape the tube spacer to suit the curvature of the cowl on all Posts.  
If you wish to have the park position with blades in the centre of the windscreen, the one wheel box will be mounted with the tubes and cable at the top of the wheel box, and the other wheel box with the tube and cable on the bottom of the wheel box. (Only applies to 2 wheel boxes. See drawing for correct installation) If you want the blades to lie flat facing the same way then the tubing and cable will be running on the top of wheel boxes. **Note: -- For LHD Cars or Wipers that require the Wiper motor to be mounted on the RHS, the Wiper motor must be rotated up side down and the Cable drive must run on the Bottom side of the wheel boxes, and the first tube may require to be length adjusted.**
- 3 Fit the centre tube between each wheel box and the end tube to the RH Side wheel box, making sure the tube flares fit into the wheel box slots provided. It may be necessary to gently bend the tube slightly to allow correct fitment,
- 4 Grease with suitable wheel grease or silicon grease the entire cable, then feed the Flexible cable thru the first wheel box, support the wiper motor while you mount the first tube into the wheel box and mount the wiper motor bracket to vehicle and the wiper motor to its bracket. On the Cobra it is necessary to mount the motor on a packing piece to give the wiper mounting clearance above the footwell deck. This also helps to line up the first tube to the first wheel box.

---

# CAE PERFORMANCE PRODUCTS PTY/LTD

Pyrenees Hwy Chewton, VIC. 3450  
Telephone : ( 03 ) 5472 1442 - Fax ( 03 ) 5472 4111

---

DO NOT STRAIN THE WIPER FIRST TUBE IN ANY WAY. (If the Tubes get any kinks or dents in them they must be replaced or the wiper motor can be seriously damaged.)

- 5 Fit 2 Speed Switch in Dash Board. **Note:** For Toggle Switch application a Relay is also required to control the Slow Speed Parking operation.
- 6 Fit Arms and Blades in the Park Position

## WINDSCREEN WIPERS

Windscreen Wiper Systems ----- Some useful helps.

### 1. Motor

This is a two speed wiper motor, with self parking.

Make sure you use the correct bracket and strap with the rubber covering, and the motor is not touching any part of the vehicle body to eliminate noise.

### 2. Drive Gear

When the new motor arrives there is a threaded brass ferrule to take the first drive tube. There are a couple of gears to fit this motor with the number 100 or 130 which is stamped on the top round plate. This is giving the least amount of travel to the rack and wiper arms.

On the top of the gear plate where the number is stamped there is a drive peg welded in position. This is the only item which changes position throughout all the gears (e.g. welded in different positions on the top plate.). Obviously if this peg was welded to the centre of the plate there would be no travel at all, so the further the peg is positioned to the outer edge of the plate the more travel you get. With each gear come 2 washers and a circlip retains the gear in to the motor, always pack with grease in the gear area before refitting the top cover.

### 3. Wheel Boxes

The wheel box size is 32 teeth on the inner drive wheel and the ideal length of shaft from the inner face to the end of the splines is 2.5 inches. This allows for the thickness of material on fibreglass cars as the first spacer can be cut down in size allowing for varying thicknesses through the bulkhead where the wheel boxes fit.

If the car has a split screen then it is quite easy to fit what was called the clapped hands system. This is by turning one of the wheel boxes through 180 degrees.

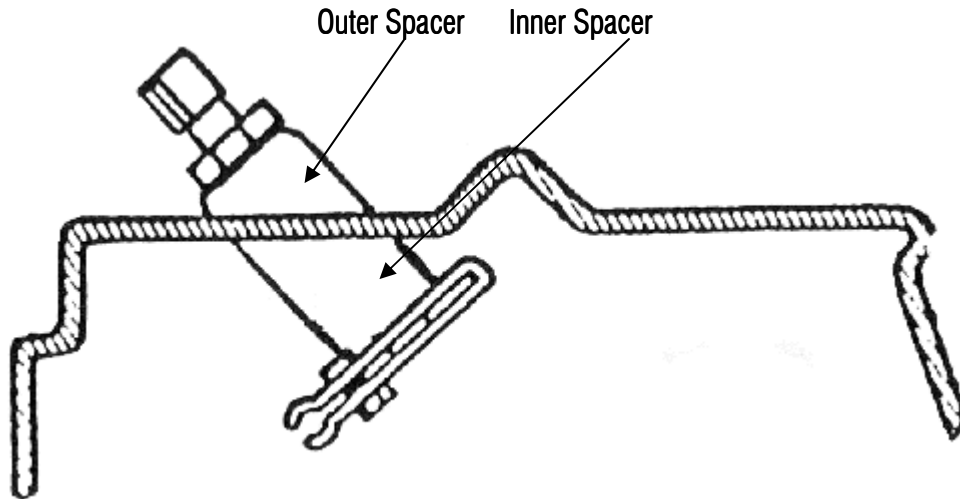
---

## CAE PERFORMANCE PRODUCTS PTY/LTD

Pyrenees Hwy Chewton, VIC. 3450  
Telephone : ( 03 ) 5472 1442 - Fax ( 03 ) 5472 4111

---

Wheelbox showing inner and outer spacer which will require some radius work to suit individual shaped cowls



#### 4. Drive Rack

When fitting a new system to a existing vehicle, it is advisable to fit a new drive rack as this is one of the items that wears, resulting in the wiper arms having too much play.

#### 5. Drive or "Bundy" Tubing Sets

It is far better to use the recommended wiper tubing (5/16 Steel Brake Tube) than to use copper tube as this can be noisy and wears very quickly on any bends. Wear of the drive tube, sharp bends or kinks in the tube, causes friction that can lead to the motor burning out.

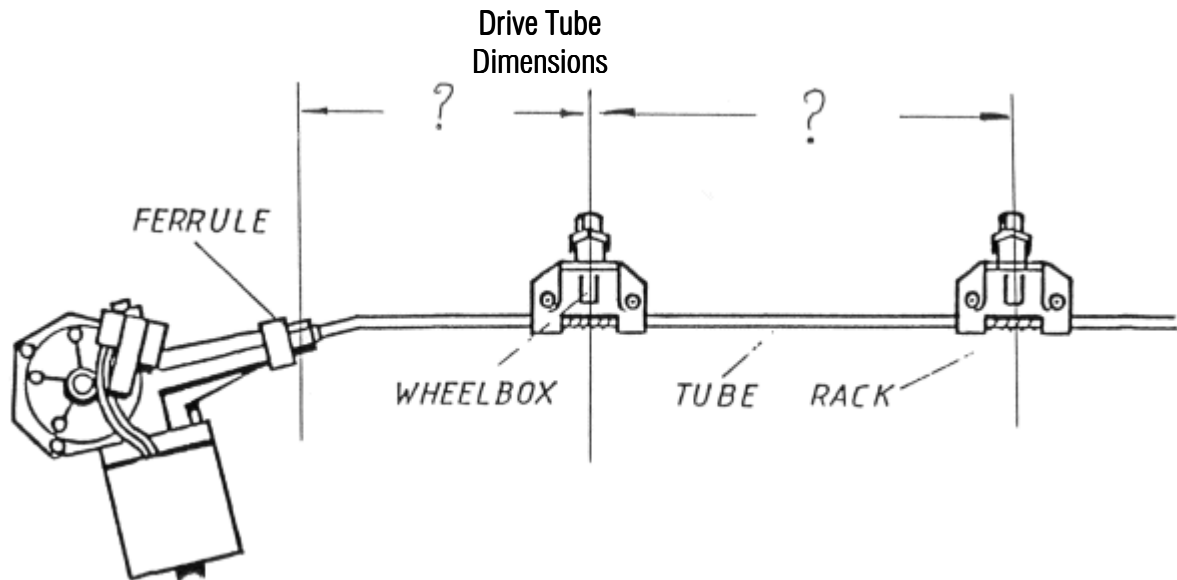
Bundy tube sets can be made up providing you give the supplier 2 dimensions. The first is the distance from the motor to the centre of the first wheel box hole, and the second the distance between the wheel box hole centres through the bulkhead. Obviously if there is a 3 wiper system then there is another dimension needed. Try to avoid sharp bends in the tubing, If you have to bend the bundy tube, an easy way to form the shape is to insert the drive rack into the tube before bending. This will keep the tube the correct diameter on any of the bends (very much like a plumber bends copper piping by inserting the spring). Always grease the rack liberally before inserting into the bundy tube.

---

## CAE PERFORMANCE PRODUCTS PTY/LTD

Pyrenees Hwy Chewton, VIC. 3450  
Telephone : ( 03 ) 5472 1442 - Fax ( 03 ) 5472 4111

---



### 6. Switch

It is important that you use the correct wiper 2-speed switch as supplied. The reason for this is that when the switch is in the off position with the ignition switched on there is one connection which becomes live. This operates the parking position. If you use a non-live switch then the wipers would stop whenever the switch was switched off.

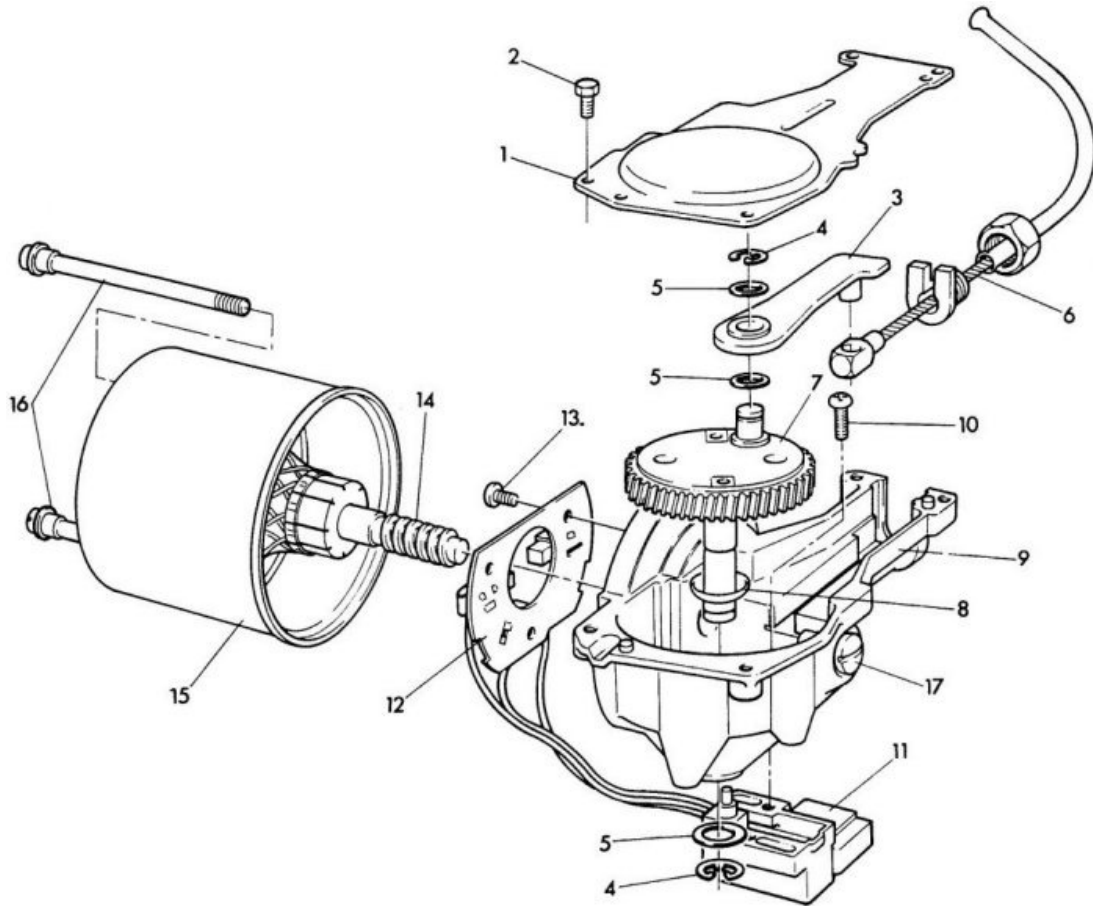
If purchasing a second hand motor make sure there are 3 wires going into the motor body. This is the way to tell if the motor is 2-speed, 1 speed only has 2 wires.

---

# CAE PERFORMANCE PRODUCTS PTY/LTD

Pyrenees Hwy Chewton, VIC. 3450  
Telephone : ( 03 ) 5472 1442 - Fax ( 03 ) 5472 4111

---



## KEY:

- 1 Gearbox cover
- 2 Screw for cover
- 3 Connecting Rod
- 4 Circlip
- 5 Washers
- 6 Flexible wiper drive

- 7 Gear wheel with crankpin
- 8 Dished washer
- 9 Gearbox
- 10 Limit switch screw
- 11 Limit switch
- 12 Brush gear

- 13 Screw for brushes
- 14 Armature
- 15 Yoke
- 16 Bolts
- 17 Thrust screw



## WIPER KITS

Made to your requirements



## WASHER KIT ASSEMBLY 1.2 LITRES

Bottle & pump assembly, mounting bracket, push button switch, tube & a twin Jet.

---

# CAE PERFORMANCE PRODUCTS PTY/LTD

Pyrenees Hwy Chewton, VIC. 3450  
Telephone : ( 03 ) 5472 1442 - Fax ( 03 ) 5472 4111

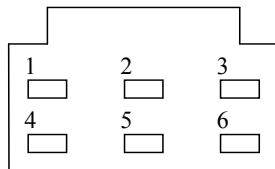
---



**WINDSCREEN WASH PUMP**

## *Wiper Motor Pin Outs.*

Plugs viewed from the front not the wiring side



- 1) Black (Earth)
- 2) Green/Red (Low)
- 3) Blue/Red (Park)
- 4) Blank
- 5) Yellow/Blue (High)
- 6) Green/White (+ve)

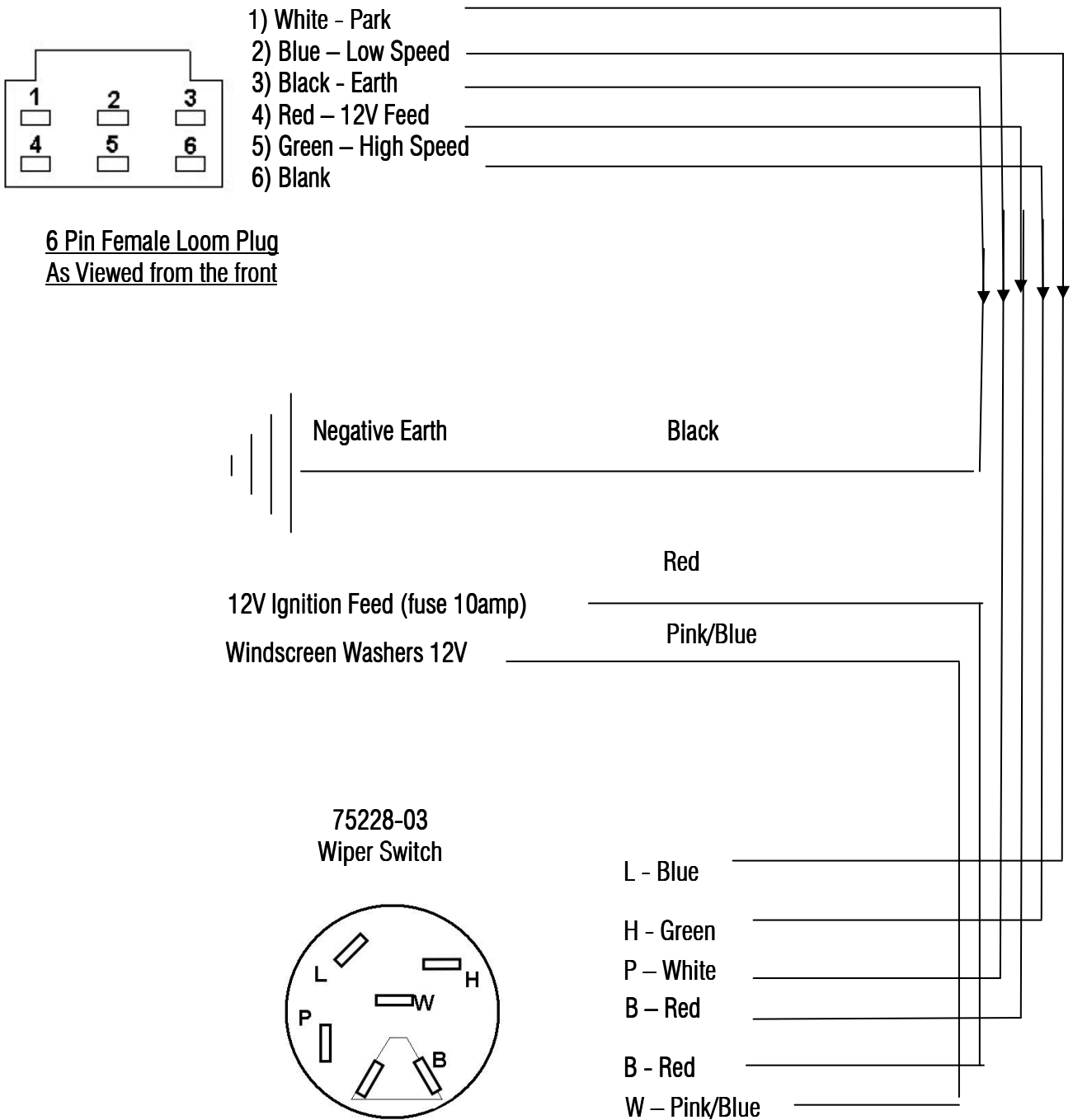
---

# CAE PERFORMANCE PRODUCTS PTY/LTD

Pyrenees Hwy Chewton, VIC. 3450  
Telephone : ( 03 ) 5472 1442 - Fax ( 03 ) 5472 4111

---

## WIPER MOTOR LOOM PINOUTS



Wiper switch system is 12V Positive Feed